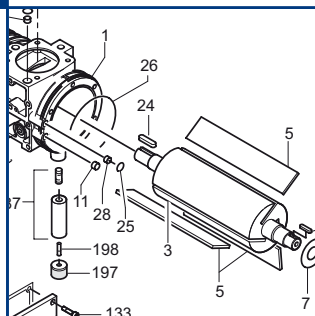


U 4.190

Ersatzteilliste
 Spare parts list
 Liste de pièces de rechange
 Listino pezzi di ricambio
 Lista de piezas de recambio
 Reserveonderdelenlijst
 Reservdelistsite
 Reservdelistsita

Reservdelistsite
 Varaosaluettelo
 Wykaz części zamiennych
 Seznam náhradních dílů
 Tartalékalkatrész lista
 Κατάλογος ανταλλακτικών
 Yedek parça listesi
 Перечень запасных частей
 备用零件目录
 スペアパーツリスト



SERVICE

BECKER
D-42279 Wuppertal
www.becker-international.com

year

No. **E**

type **U 4.190-XX**

frequency Hz

speed min⁻¹

power required kW

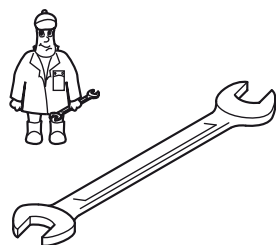
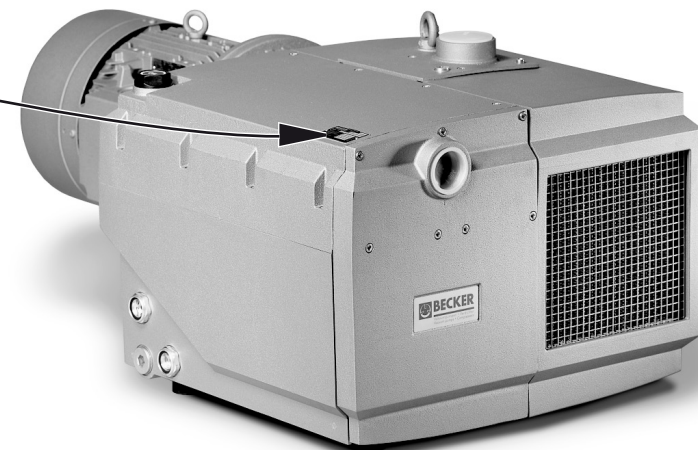
inlet capacity m³/h

pressure + mbar

vacuum - mbar

Made in Germany

Index Variante



Pos.	Menge ²⁾ Quantity Quantité Quantità Cantidad	Bestell-Nr. Ident No. No. Identification No. Identificazione No. de pedido	Bezeichnung Description Designation Designazione Descripción
□	1	549000 26400	Dichtungssatz, Complete set of seals, Jeu de joints, Kit di guarnizioni, Junta Completa
5	SATZ/KIT	900506 00003	Schieber, Rotor Vane, Palette, Empujador
83	2	965415 00000	Luftentölelement, Oil separating element, Element separation huile, Cartuccia sepa-ratore olio, Elemento de desaceitar de aire

²⁾ erforderliche Bestellmenge / necessary order quantity / quantité nécessaire / quantità di ordinazione necessari / cantidad necesario

Wartung
Maintenance
Entretien
Manutenzione
Mantenimiento



www.becker-international.com

Sales and service network

U 4.190

Standard



Variante



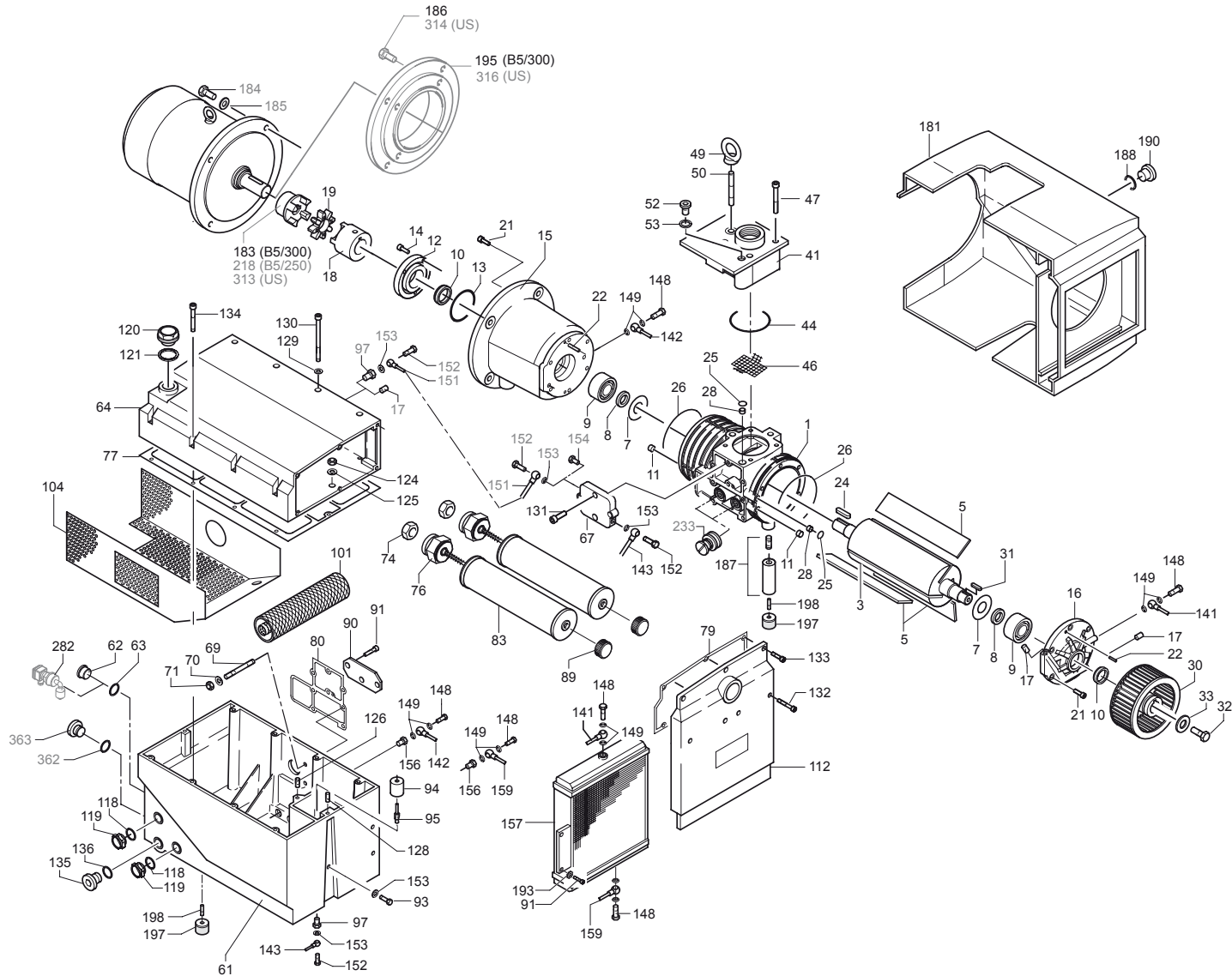
U 4.190/XX

①+②

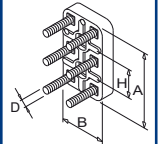
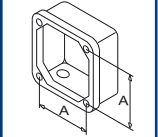
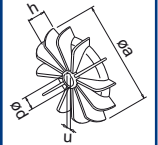
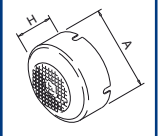
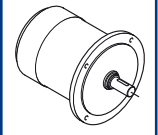
U 4.190 SAK-51 + F/K-51



③




U 4.190 SAK-54






SERVICE ?




	Pos.	Bestell Nr.	Beschreibung	
U 4.190	□	549000 26400	DICHTUNGSSATZ ¹⁾	
	1	000100 26400	GEHÄUSE	
	3	020000 26400	KOLBEN	
	5	900506 00003	SCHIEBER, KUNSTSTOFF (SATZ) ²⁾	
	7	917611 00000	LAGERDICHTRING	
	8	911472 00000	DISTANZSCHEIBE	
	9	906662 00000	WÄLZLAGER 6207 DIN 625	
	10	906574 00000	WELLENDICHTRING	
	11	912821 00000	VERSCHLUSSDECKEL	
	12	001100 26400	LAGERDECKEL	
	14	945319 00000	INNENSECHSKANTSCHRAUBE	
	15	000800 26400	SEITENDECKEL MIT LATERNE	
	16	000700 26400	SEITENDECKEL	
	17	912871 00000	VERSCHLUSS-SCHRAUBE	
	18	902108 00000	KUPPLUNGSHÄLFTE	
	19	902210 00000	KUPPLUNGSSCHEIBE	
	21	945331 00000	INNENSECHSKANTSCHRAUBE	
	22	948742 00000	PASSKERBSTIFT	
	24	947733 00000	PASSFEDER	
	28	952008 00000	SPANNHÜLSE	
	30	502301 26400	VENTILATOR MIT NABE	
	31	947732 00000	PASSFEDER	
	32	945270 00000	WELLENENDSCHRAUBE	
	33	949409 00000	UNTERLEGSCHEIBE	
	41	537501 26400	RÜCKSCHLAGVENTIL, KOMPL.	
	46	008002 26400	SIEB	
	47	945371 00000	INNENSECHSKANTSCHRAUBE	
	49	951602 00000	RINGMUTTER	
	50	946969 00000	STIFTSCHRAUBE	
	52	951228 02000	VERSCHLUSS-SCHRAUBE	
	61	002403 26400	ABSCHIEDERGEHÄUSE	
	62	951221 00000	VERSCHLUSS-SCHRAUBE	
	64	001702 26400	ÖLBEHÄLTER-DECKEL	
	67	003701 26400	DECKEL	
	69	946968 00000	STIFTSCHRAUBE	
	70	917107 00000	TELLERFEDER	
	71	947105 00000	SECHSKANTMUTTER	
	74	305800 02000	ÜBERWURFMUTTER	
	76	727501 99628	ABBLASEVENTIL	
	83	965415 00000	LUFTENTÖLELEMENT (2x) ²⁾	
	89	921500 50000	HANDGRIFF	
	90	013300 26400	PRALLBLECH	
	91	945318 00000	INNENSECHSKANTSCHRAUBE	
	93	945226 00000	SECHSKANTSCHRAUBE	
	94	867800 99559	SCHWIMMER	
	95	003300 10700	DÜSE	
	97	912300 00000	ANSCHLUSS-SCHRAUBE	
	101	506000 26400	GROBABSCHIEDER, KOMPLETT	
	104	008001 26400	SIEB	
	112	003703 26400	DECKEL	
	119	907309 00000	ÖLSCHAUGLAS	
	120	916800 10000	SCHRAUBDECKEL	
	124	947104 00000	SECHSKANTMUTTER	
	125	948504 00000	FEDERRING	
	126	951001 02000	STIFTSCHRAUBE	
	128	951003 02000	STIFTSCHRAUBE	
	130	945383 00000	INNENSECHSKANTSCHRAUBE	
	131	945330 00000	INNENSECHSKANTSCHRAUBE	
	132	945363 00000	INNENSECHSKANTSCHRAUBE	

	Pos.	Bestell Nr.	Beschreibung	
	133	945321 00000	INNENSECHSKANTSCHRAUBE	
	134	945324 00000	INNENSECHSKANTSCHRAUBE	
	135	951220 00000	VERSCHLUSS-SCHRAUBE	
	141	012206 26400	LEITUNG	
	142	012207 26400	LEITUNG	
	143	012202 26400	ÖLRÜCKFÜHRLEITUNG	
	148	948402 00000	HOHLSCHRAUBE	
	151	012203 26400	ÖLSAUGLEITUNG	
	152	009400 19000	KUGELSTÜCKSCHRAUBE	
	154	012900 19000	VERSCHLUSS-SCHRAUBE	
	156	912306 00000	ANSCHLUSS-SCHRAUBE	
	157	960201 26400	KÜHLER	
	159	012205 26400	LEITUNG	
	181	018301 26400	HAUBE	
	183	902100 21900	MOTORKUPPLUNG, Ø38MM (B5/300)	
	184	945237 00000	SECHSKANTSCHRAUBE	
	185	947506 00000	UNTERLEGSCHEIBE	
	186	945349 00000	INNENSECHSKANTSCHRAUBE (B5/300)	
	187	568100 26400	STÜTZE	
	188	949408 00000	U-SCHEIBE	
	190	001800 20000	WELLENABSCHLUSS-SCHRAUBE	
	193	949203 00000	ZAHNSCHEIBE	
	195	037900 26400	ZWISCHENFLANSCH (B5/300)	
	197	741302 00000	GUMMIPUFFER	
	198	945634 00000	GEWINDESTIFT	
	218	902108 00000	MOTORKUPPLUNG, Ø28MM (B5/250)	
	233	537500 10700	VENTIL, KOMPL.	
	282	741103 99682	NIVEAUGEBER - OPTIONAL	
	313	902100 21300	MOTORKUPPLUNG (US)	
	314	945236 00000	SECHSKANTSCHRAUBE (US)	
	316	037900 12900	ZWISCHENFLANSCH (US)	
		960009 00200	BECKER LUBE M 100 (MINERALÖL) - 5L	
		960016 00200	BECKER LUBE S 100 (SYNTHETIKÖL) - 5L	
		960023 00200	BECKER LUBE SL 100 (LEBENSMITTELBEREICH) - 5L	
¹⁾ Dichtungssatz - 549000 26400 - Pos.: 13, 25, 26, 44, 53, 63, 77, 79, 80, 118, 121, 129, 136, 149, 153, 283				
²⁾ erforderliche Bestellmenge / Wartung				

E INDEX	Pos.	Ident No.	Description	
U 4.190	□	549000 26400	SET OF SEALS ¹⁾	
	1	000100 26400	PUMP BODY	
	3	020000 26400	ROTOR	
	5	900506 00003	ROTOR VANE IN PLASTIC (KIT) ²⁾	
	7	917611 00000	BEARING SEALING WASHER	
	8	911472 00000	DISTANCE DISC	
	9	906662 00000	BEARING 6207 DIN 625	
	10	906574 00000	SHAFT SEALING RING	
	11	912821 00000	CAP	
	12	001100 26400	BEARING COVER	
	14	945319 00000	SOCKET HEAD SCREW	
	15	000800 26400	LID WITH FLANGE	
	16	000700 26400	LID	
	17	912871 00000	LOCKING SCREW	
	18	902108 00000	COUPLING	
	19	902210 00000	COUPLING DISC	
	21	945331 00000	SOCKET HEAD SCREW	
	22	948742 00000	STRAIGHT PIN	
	24	947733 00000	KEY	
	28	952008 00000	LOCATING PEG	
	30	502301 26400	FAN	
	31	947732 00000	KEY	
	32	945270 00000	SHAFT END BOLD	
	33	949409 00000	WASHER	
	41	537501 26400	NON RETURN VALVE, ENTIRE	
	46	008002 26400	SIEVE	
	47	945371 00000	SOCKET HEAD SCREW	
	49	951602 00000	RING UNIT	
	50	946969 00000	STUD	
	52	951228 02000	LOCKING SCREW	
	61	002403 26400	HOUSING FOR OIL SEPARATION	
	62	951221 00000	LOCKING SCREW	
	64	001702 26400	OIL TANK COVER	
	67	003701 26400	COVER	
	69	946968 00000	STUD	
	70	917107 00000	SPRING COLLAR	
	71	947105 00000	HEX.NUT	
	74	305800 02000	COUPLING NUT	
	76	727501 99628	BLOW OFF VALVE	
	83	965415 00000	OIL SEPARATION ELEMENT (2x) ²⁾	
	89	921500 50000	HANDLE	
	90	013300 26400	METAL FILTER	
	91	945318 00000	SOCKET HEAD SCREW	
	93	945226 00000	HEX. HEAD SCREW	
	94	867800 99559	FLOAT	
	95	003300 10700	NOZZLE	
	97	912300 00000	CONNECTING SCREW	
	101	506000 26400	COARSE SEPARATOR	
	104	008001 26400	SIEVE	
	112	003703 26400	COVER	
	119	907309 00000	OIL SIGHT GLASS	
	120	916800 10000	COVER	
	124	947104 00000	HEX.NUT	
	125	948504 00000	SPRING WASHER	
	126	951001 02000	STUD	
	128	951003 02000	STUD	
	130	945383 00000	SOCKET HEAD SCREW	
	131	945330 00000	SOCKET HEAD SCREW	
	132	945363 00000	SOCKET HEAD SCREW	


E INDEX	Pos.	Ident No.	Description	
	133	945321 00000	SOCKET HEAD SCREW	
	134	945324 00000	SOCKET HEAD SCREW	
	135	951220 00000	LOCKING SCREW	
	141	012206 26400	PIPE	
	142	012207 26400	PIPE	
	143	012202 26400	OIL RETURN PIPE	
	148	948402 00000	HOLLOW SCREW	
	151	012203 26400	OIL SUCTION PIPE	
	152	009400 19000	HOLLOW HOLDING SCREW	
	154	012900 19000	LOCKING SCREW	
	156	912306 00000	CONNECTING SCREW	
	157	960201 26400	COOLER	
	159	012205 26400	PIPE	
	181	018301 26400	PROTECTING HOOD	
	183	902100 21900	COUPLING MOTOR SIDE, Ø38MM (B5/300)	
	184	945237 00000	HEX-HEAD SCREW	
	185	947506 00000	WASHER	
	186	945349 00000	SOCKET HEAD SCREW (B5/300)	
	187	568100 26400	SUPPORT PILLAR	
	188	949408 00000	WASHER	
	190	001800 20000	SCREW	
	193	949203 00000	TOOTHED SPRING WASHER	
	195	037900 26400	INTERMEDIATE FLANGE (B5/300)	
	197	741302 00000	RUBBER BUFFER	
	198	945634 00000	THREADED PIN	
	218	902108 00000	COUPLING MOTOR SIDE, Ø28MM (B5/250)	
	233	537500 10700	VALVE, ENTIRE	
	282	741103 99682	OIL LEVEL CONTROL - OPTIONAL	
	313	902100 21300	COUPLING MOTOR SIDE (US)	
	314	945236 00000	HEX-HEAD SCREW (US)	
	316	037900 12900	INTERMEDIATE FLANGE (US)	
		960009 00200	BECKER LUBE M 100 (MINERAL OIL) - 5L	
		960016 00200	BECKER LUBE S 100 (SYNTHETIC OIL) - 5L	
		960023 00200	BECKER LUBE SL 100 (FOOD SECTOR) - 5L	
¹⁾ Set of seals - 549000 26400 - Pos.: 13, 25, 26, 44, 53, 63, 77, 79, 80, 118, 121, 129, 136, 149, 153, 283 ²⁾ necessary order quantity / maintenance				

E INDICE	Pos.	No. Identification	Designation	FR	
U 4.190	□	549000 26400	JEU DE JOINTS ¹⁾		
	1	000100 26400	CORP DE POMPE		
	3	020000 26400	PISTON		
	5	900506 00003	PALETTE ON PLASTIQUE (KIT) ²⁾		
	7	917611 00000	RONDELLE D'ETANCHEITE DU ROULEMENT		
	8	911472 00000	DISQUE AJUSTAGE		
	9	906662 00000	ROULEMENT 6207 DIN 625		
	10	906574 00000	BAGUE D'ETANCHEITE P.L'AXE		
	11	912821 00000	COUVERCLE		
	12	001100 26400	COUVERCLE DE ROULEMENTE		
	14	945319 00000	VIS HEXAGONALE INTERNE		
	15	000800 26400	COUVERCLE AVEC BRIDE		
	16	000700 26400	COUVERCLE		
	17	912871 00000	BOUCHON		
	18	902108 00000	ACCOUPEMENT		
	19	902210 00000	DISQUE D'ACCOUPEMENT		
	21	945331 00000	VIS HEXAGONALE INTERNE		
	22	948742 00000	GOUPILLE CYLINDRIQUE		
	24	947733 00000	CLAVETTE		
	28	952008 00000	DOVILLE DE ETRAGE		
	30	502301 26400	VENTILATEUR		
	31	947732 00000	CLAVETTE		
	32	945270 00000	VIS BOUT D'ARBRE		
	33	949409 00000	RONDELLE		
	41	537501 26400	SOUPAPE ANTI-RETOUR, ENTIER		
	46	008002 26400	FILTRE		
	47	945371 00000	VIS HEXAGONALE INTERNE		
	49	951602 00000	ECROU A ANNEAU		
	50	946969 00000	PRISONNIER		
	52	951228 02000	BOUCHON		
	61	002403 26400	CORP DE SEPARATEUR D'HUILE		
	62	951221 00000	BOUCHON		
	64	001702 26400	COUVERCLE RESERVOIR D'HUILE		
	67	003701 26400	COUVERCLE		
	69	946968 00000	PRISONNIER		
	70	917107 00000	RONDELLE A RESSORT		
	71	947105 00000	ECROU A 6 PANS		
	74	305800 02000	ECROU		
	76	727501 99628	SILENCIEUX		
	83	965415 00000	ELEMENT SEPARATION HUILE (2x) ²⁾		
	89	921500 50000	POIGNEE		
	90	013300 26400	FILTRE METALIQUE		
	91	945318 00000	VIS HEXAGONALE INTERNE		
	93	945226 00000	VIS HEXAGONALE		
	94	867800 99559	PIED CAOUTCHOVE		
	95	003300 10700	GICLEUR		
	97	912300 00000	VIS DE RACCORD		
	101	506000 26400	SEPARATEUR A GROS		
	104	008001 26400	FILTRE		
	112	003703 26400	COUVERCLE		
	119	907309 00000	VERRE REGARD		
	120	916800 10000	COUVERCLE		
	124	947104 00000	ECROU A 6PANS		
	125	948504 00000	ANNEAU-RESSORT		
	126	951001 02000	PRISONNIER		
	128	951003 02000	PRISONNIER		
	130	945383 00000	VIS HEXAGONALE INTERNE		
	131	945330 00000	VIS HEXAGONALE INTERNE		
	132	945363 00000	VIS HEXAGONALE INTERNE		


E INDICE	Pos.	No. Identification	Designation	FR	
	133	945321 00000	VIS HEXAGONALE INTERNE		
	134	945324 00000	VIS HEXAGONALE INTERNE		
	135	951220 00000	BOUCHON		
	141	012206 26400	TUYAU		
	142	012207 26400	TUYAU		
	143	012202 26400	TUYAU D'HUILE		
	148	948402 00000	VIS CREUSE		
	151	012203 26400	TUYAU D'HUILE		
	152	009400 19000	VIS CREUSE DE FIXATION		
	154	012900 19000	BUCHON		
	156	912306 00000	VIS DE RACCORD		
	157	960201 26400	REFROIDISSEUR		
	159	012205 26400	TUYAU		
	181	018301 26400	CARTER PROTECTEUR		
	183	902100 21900	ACCOUPEMENT MOTEUR, Ø38MM (B5/300)		
	184	945237 00000	VIS HEXAGONALE		
	185	947506 00000	RONDELLE		
	186	945349 00000	VIS HEXAGONALE INTERNE (B5/300)		
	187	568100 26400	SUPPORT INTERMEDIAIRE		
	188	949408 00000	RONDELLE		
	190	001800 20000	VIS		
	193	949203 00000	DENT DISQUE		
	195	037900 26400	BRIDE INTERMEDIAIRE (B5/300)		
	197	741302 00000	AMORTISSEUR EN CAOUTCHOUC		
	198	945634 00000	GOUPILLE FILETEE		
	218	902108 00000	ACCOUPEMENT MOTEUR, Ø28MM (B5/250)		
	233	537500 10700	SOUPAPE, ENTIER		
	282	741103 99682	INDICATEUR DE NIVEAU - EN OPTION		
	313	902100 21300	ACCOUPEMENT MOTEUR (US)		
	314	945236 00000	VIS HEXAGONALE (US)		
	316	037900 12900	BRIDE INTERMEDIAIRE (US)		
		960009 00200	BECKER LUBE M 100 (HUILE MINÉRALE) - 5L		
		960016 00200	BECKER LUBE S 100 (L'HUILE SYNTHÉTIQUE) - 5L		
		960023 00200	BECKER LUBE SL 100 (SECTEUR DE L'ALIMENTATION) - 5L		



¹⁾ Jeu de joints - 549000 26400 - Pos.: 13, 25, 26, 44, 53, 63, 77, 79, 80, 118, 121, 129, 136, 149, 153, 283
²⁾ quantité nécessaire / entretien

E INDICE	Pos.	No. Identificazione	Designazione
U 4.190	□	549000 26400	SERIE DI GUARNIZIONE ¹⁾
	1	000100 26400	CARCASSA
	3	020000 26400	ROTORE
	5	900506 00003	PALETTE IN PLASTICA (KIT) ²⁾
	7	917611 00000	ANELLO DI TENUTA DEL CUSCINETTO
	8	911472 00000	DISCO DISTANZA
	9	906662 00000	CUSCINETTO 6207 DIN 625
	10	906574 00000	GUARNIZIONE PER L'ALBERO
	11	912821 00000	COPERCHIO
	12	001100 26400	COPERCHIO CUSCINETTO
	14	945319 00000	VITE ESAGONALE INTERNA
	15	000800 26400	COPERCHIO CON FLANGIA
	16	000700 26400	COPERCHIO
	17	912871 00000	VITE DI CHIUSURA
	18	902108 00000	GIUNTO
	19	902210 00000	DISCO GUINTO
	21	945331 00000	VITE ESAGONALE INTERNA
	22	948742 00000	PERNO
	24	947733 00000	CHIAVETTA
	28	952008 00000	SPINE DI RISCONTRO
	30	502301 26400	VENTILATORE
	31	947732 00000	CHIAVETTA
	32	945270 00000	VITE DI CHIUSURA ALBERO
	33	949409 00000	RONDELLA
	41	537501 26400	VALVOLA NON RITORNO, INTERO
	46	008002 26400	FILTRO
	47	945371 00000	VITE ESAGONALE INTERNA
	49	951602 00000	GOLFARE CON FORO FILETTATO
	50	946969 00000	L'ASTA A VITE
	52	951228 02000	VITE DI CHIUSURA
	61	002403 26400	CARCASSA SEPARATORE OLIO
	62	951221 00000	VITE DI CHIUSURA
	64	001702 26400	COPERCHIO SERBATOIO OLIO
	67	003701 26400	COPERCHIO
	69	946968 00000	L'ASTA A VITE
	70	917107 00000	RONDELLA A MOLLA
	71	947105 00000	DADO ESAGONALE
	74	305800 02000	DADO DI RISVOLTO
	76	727501 99628	SILENZIATORE
	83	965415 00000	CARTUCCIA SEPARATORE OLIO (2x) ²⁾
	89	921500 50000	MANETTA
	90	013300 26400	FILTRO METALICO
	91	945318 00000	VITE ESAGONALE INTERNA
	93	945226 00000	VITE ESAGONALE
	94	867800 99559	GALLEGGIANTE
	95	003300 10700	UGELLO
	97	912300 00000	ATTACO FILETTATO
	101	506000 26400	SEPARATORE GROSSOLANO
	104	008001 26400	FILTRO
	112	003703 26400	COPERCHIO
	119	907309 00000	SPIA LIVELLO OLIO
	120	916800 10000	COPERCHIO
	124	947104 00000	DADO ESAGONALE
	125	948504 00000	ANELLO A MOLLA
	126	951001 02000	L'ASTA A VITE
	128	951003 02000	L'ASTA A VITE
	130	945383 00000	VITE ESAGONALE INTERNA
	131	945330 00000	VITE ESAGONALE INTERNA
	132	945363 00000	VITE ESAGONALE INTERNA




E INDICE	Pos.	No. Identificazione	Designazione
	133	945321 00000	VITE ESAGONALE INTERNA
	134	945324 00000	VITE ESAGONALE INTERNA
	135	951220 00000	VITE DI CHIUSURA
	141	012206 26400	CONDOTTO
	142	012207 26400	CONDOTTO
	143	012202 26400	CONDOTTO OLIO
	148	948402 00000	VITE ESAGONALE
	151	012203 26400	CONDOTTO OLIO
	152	009400 19000	VITE PASSAGGIO OLIO
	154	012900 19000	VITE DI CHIUSURA
	156	912306 00000	ATTACO FILETTATO
	157	960201 26400	RAFFREDDATORE
	159	012205 26400	CONDOTTO
	181	018301 26400	CARTER DI PROTEZIONE
	183	902100 21900	GIUNTO MOTORE, Ø38MM (B5/300)
	184	945237 00000	VITE ESAGONALE
	185	947506 00000	RONDELLA
	186	945349 00000	VITE ESAGONALE INTERNA (B5/300)
	187	568100 26400	SUPPORTO
	188	949408 00000	RONDELLA
	190	001800 20000	VITE
	193	949203 00000	DISCO A DENTE
	195	037900 26400	FLANGE INTERMEDIA (B5/300)
	197	741302 00000	AMMORTIZZATORE IN GOMMA
	198	945634 00000	SPINA FILETTATURA
	218	902108 00000	GIUNTO MOTORE, Ø28MM (B5/250)
	233	537500 10700	VALVOLA, INTERO
	282	741103 99682	SONDA D'OLIO - OPZIONALE
	313	902100 21300	GIUNTO MOTORE (US)
	314	945236 00000	VITE ESAGONALE (US)
	316	037900 12900	FLANGE INTERMEDIA (US)
		960009 00200	BECKER LUBE M 100 (OLIO MINERALE) - 5L
		960016 00200	BECKER LUBE S 100 (OLIO SINTETICO) - 5L
		960023 00200	BECKER LUBE SL 100 (SETTORE ALIMENTARE) - 5L

¹⁾ Serie di guarnizione - 549000 26400 - Pos.: 13, 25, 26, 44, 53, 63, 77, 79, 80, 118, 121, 129, 136, 149, 153, 283
²⁾ quantità di ordinazione necessari / manutenzione

E INDICE	Pos.	No. De pedido	Descripción	
U 4.190	□	549000 26400	JUNTA COMPLETA ¹⁾	
	1	000100 26400	CARCASA	
	3	020000 26400	ÉMBOLO	
	5	900506 00003	EMPUJADOR DE PLÁSTICO (KIT) ²⁾	
	7	917611 00000	ANILLO DE COJINETE DE JUNTA	
	8	911472 00000	ARANDELA DISTANCIADORA	
	9	906662 00000	COJINETE DE RODAMIENTO 6207 DIN 625	
	10	906574 00000	ANILLO DE JUNTA DE ÁRBOL	
	11	912821 00000	TAPA DE CIERRE	
	12	001100 26400	TAPA DE COJINETE	
	14	945319 00000	TORNILLO HEXAGONAL INTERIOR	
	15	000800 26400	TAPA LATERAL CONFAROL	
	16	000700 26400	TAPA LATERAL	
	17	912871 00000	TORNILLO DE CIERRE	
	18	902108 00000	MITAD DE ACOPLAMIENTO	
	19	902210 00000	DISCO DE ACOPLAMIENTO	
	21	945331 00000	TORNILLO HEXAGONAL INTERIOR	
	22	948742 00000	PASADOR ENTALLADO DE AJUSTE	
	24	947733 00000	LENGÜETA DE AJUSTE	
	28	952008 00000	CASQUILLO TENSOR	
	30	502301 26400	VENTILADOR CON CUBO	
	31	947732 00000	LENGÜETA DE AJUSTE	
	32	945270 00000	TORNILLO TERMINAL DE ÁRBOL	
	33	949409 00000	ARANDELA	
	41	537501 26400	VÁLVULA ANTIRRETORNO COMPLETA	
	46	008002 26400	CRIBA	
	47	945371 00000	TORNILLO HEXAGONAL INTERIOR	
	49	951602 00000	TUERCA DE CÁNCAMO	
	50	946969 00000	ESPÁRRAGO	
	52	951228 02000	TORNILLO DE CIERRE	
	61	002403 26400	CARCASA SEPARADORA	
	62	951221 00000	TORNILLO DE CIERRE	
	64	001702 26400	TAPA DE RECIPIENTE DE ACEITE	
	67	003701 26400	TAPA	
	69	946968 00000	ESPÁRRAGO	
	70	917107 00000	ARANDELA DE APOYO DEL RESORTE	
	71	947105 00000	TUERCA HEXAGONAL	
	74	305800 02000	SOBRETUERCA	
	76	727501 99628	VÁLVULA DE BARRIDO	
	83	965415 00000	ELEMENTO DE DESACEITAR DE AIRE (2x) ²⁾	
	89	921500 50000	EMPUÑADURA	
	90	013300 26400	CHAPA DE REBOTE	
	91	945318 00000	TORNILLO HEXAGONAL INTERIOR	
	93	945226 00000	TORNILLO DE CABEZA HEXAGONAL	
	94	867800 99559	FLOTADOR	
	95	003300 10700	TOBERA	
	97	912300 00000	TORNILLO DE EMPALME	
	101	506000 26400	SEPARADOR DE SÓLIDOS GRUESOS COMPLETO	
	104	008001 26400	CRIBA	
	112	003703 26400	TAPA	
	119	907309 00000	CRISTAL MIRILLA DE ACEITE	
	120	916800 10000	TAPA ROSCADA	
	124	947104 00000	TUERCA HEXAGONAL	
	125	948504 00000	ARANDELA DE MUELLE	
	126	951001 02000	ESPÁRRAGO	
	128	951003 02000	ESPÁRRAGO	
	130	945383 00000	TORNILLO HEXAGONAL INTERIOR	
	131	945330 00000	TORNILLO HEXAGONAL INTERIOR	
	132	945363 00000	TORNILLO HEXAGONAL INTERIOR	

E INDICE	Pos.	No. De pedido	Descripción	
	133	945321 00000	TORNILLO HEXAGONAL INTERIOR	
	134	945324 00000	TORNILLO HEXAGONAL INTERIOR	
	135	951220 00000	TORNILLO DE CIERRE	
	141	012206 26400	CONDUCTO	
	142	012207 26400	CONDUCTO	
	143	012202 26400	CONDUCTO DE RETROALIMENTACIÓN DE ACEITE	
	148	948402 00000	TORNILLO HUECO	
	151	012203 26400	CONDUCTO DE ASPIRACIÓN DE ACEITE	
	152	009400 19000	TORNILLO DE PIEZA ESFÉRICA	
	154	012900 19000	TORNILLO DE CIERRE	
	156	912306 00000	TORNILLO DE EMPALME	
	157	960201 26400	REFRIGERADOR	
	159	012205 26400	CONDUCTO	
	181	018301 26400	SOMBRERETE	
	183	902100 21900	ACOPAMIENTO DE MOTOR, Ø38MM (B5/300)	
	184	945237 00000	TORNILLO DE CABEZA HEXAGONAL	
	185	947506 00000	ARANDELA	
	186	945349 00000	TORNILLO HEXAGONAL INTERIOR (B5/300)	
	187	568100 26400	APOYO	
	188	949408 00000	ARANDELA	
	190	001800 20000	TORNILLO TERMINAL DE ÁRBOL	
	193	949203 00000	POLEA DENTADA	
	195	037900 26400	BRIDA INTERMEDIA (B5/300)	
	197	741302 00000	AMORTIGUADOR DE GOMA	
	198	945634 00000	VARILLA ROSCADA	
	218	902108 00000	ACOPAMIENTO DE MOTOR, Ø28MM (B5/250)	
	233	537500 10700	VÁLVULA COMPLETA	
	282	741103 99682	GENERADOR DE NIVEL - OPCIONAL	
	313	902100 21300	ACOPAMIENTO DE MOTOR (US)	
	314	945236 00000	TORNILLO DE CABEZA HEXAGONAL (US)	
	316	037900 12900	BRIDA INTERMEDIA (US)	
		960009 00200	BECKER LUBE M 100 (ACEITE MINERAL) - 5L	
		960016 00200	BECKER LUBE S 100 (ACEITE SINTÉTICO) - 5L	
		960023 00200	BECKER LUBE SL 100 (SECTOR ALIMENTARIO) - 5L	

¹⁾ Junta completa - 549000 26400 - Pos.: 13, 25, 26, 44, 53, 63, 77, 79, 80, 118, 121, 129, 136, 149, 153, 283
²⁾ cantidad necesario / mantenimiento

U 4.190	Variante 	Pos. ²⁾	Bestell Nr. / Ident No. / No. Identification / No. Identificazione / No. De pedido		Beschreibung / Description / Designation / Designazione / Desripcion
					
① U 4.190 SA/K-51 ② U 4.190 F/K-51 - mit Ölbadheizung, Niveau-Geber und Thermostat - with oil bath heating, level transmitter and heat valve - avec chauffage du bain d'huile, capteur de niveau et thermostat - con riscaldamento a bagno d'olio, indicatore di livello e termostato - con calefacción de baño de aceite, codificador de nivel y termostato		61		002406 26400	ÖLABSCHEIDERGEHÄUSE / HOUSING FOR OIL SEPARATION / CARCASSE POUR SEPARATION D'HUILLE / CARCASSA SEPARATORE OLIO / CARCASA SEPARADORA DE ACEITE
		62		951221-00100	VERSCHLUSSSCHRAUBE / LOCKING SCREW / BOUCHON / VITE DI CHIUSURA / TORNILLO DE CIERRE
		282	741103 99682		NIVEAUGEBER / LEVEL TRANSMITTER / CAPTEUR DE NIVEAU / INDICATORE DI LIVELLO / CODIFICADOR DE NIVEL
		340	002408 26400		ÖLABSCHEIDERGEHÄUSE / HOUSING FOR OIL SEPARATION / CARCASSE POUR SEPARATION D'HUILLE / CARCASSA SEPARATORE OLIO / CARCASA SEPARADORA DE ACEITE
		341	960202 26400		ROHRHEIZKÖRPER / PIPE HEATER / CORPS DE CHAUFFE / SCALDIGLIA / CALEFACTOR TUBULAR
		342	943400 70000		TEMPERATUR-WÄCHTER / THERMOSTAT / THERMOSTAT / INTERRUPTORE TERMICO / TERMOSTATO
③ U 4.190 SA/K-54 - mit zusätzlicher Ölablassbohrung - with additional oil draining bore hole - avec trou de vidange d'huile - con foro di scarico dell'olio aggiuntivo - con perforación de salida de aceite adicional		61		002406 26400	ÖLABSCHEIDERGEHÄUSE / HOUSING FOR OIL SEPARATION / CARCASSE POUR SEPARATION D'HUILLE / CARCASSA SEPARATORE OLIO / CARCASA SEPARADORA DE ACEITE
		361	002407 26400		ÖLABSCHEIDERGEHÄUSE / HOUSING FOR OIL SEPARATION / CARCASSE POUR SEPARATION D'HUILLE / CARCASSA SEPARATORE OLIO / CARCASA SEPARADORA DE ACEITE
		362	948013 00000		DICHTRING / SEALING RING / JOINT / ANELLO / ANILLO
		363	951220 00100		VERSCHLUSSSCHRAUBE / LOCKING SCREW / BOUCHON / VITE DI CHIUSURA / TORNILLO DE CIERRE

²⁾ variantenabhängige Bauteile / variant-dependent components / composants variante-dependantes / componenti variante-dispendenti / componentes variante-dependientes