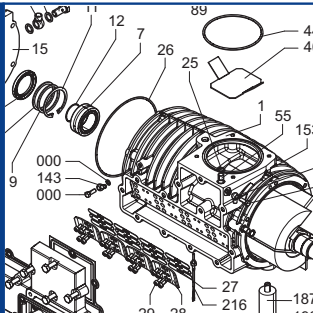


# U 4.300



**SERVICE**

**BECKER**  
D-42279 Wuppertal  
www.becker-international.com

No. **A** year

type **U 4.300-XX**

frequency  Hz

speed  min<sup>-1</sup>

power required  kW

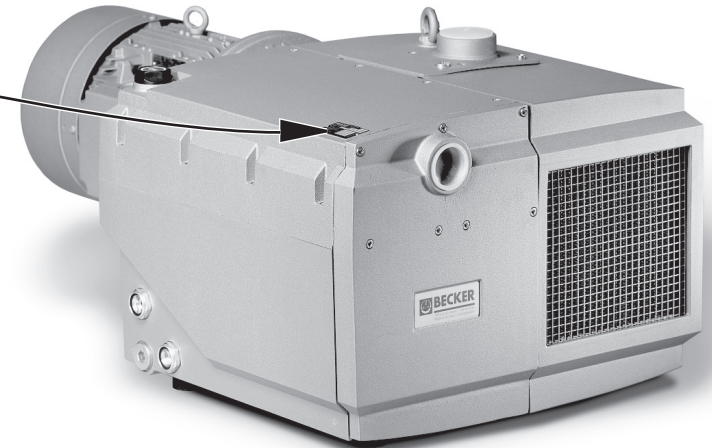
inlet capacity  m<sup>3</sup>/h

pressure +  mbar

vacuum -  mbar

Made in  Germany

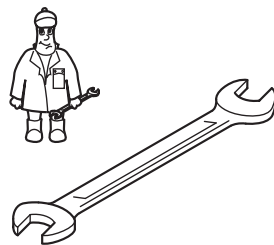
Index Variante



**Ersatzteilliste**  
Spare parts list  
Liste de pièces de rechange  
Listino pezzi di ricambio  
Lista de piezas de recambio  
Lista de peças sobresselentes  
Reserveonderdelenlijst  
Atsarginių dalių sąrašas  
Varuosad nimekirja  
Rezerves daļu saraksts

**Reservedelsliste**  
Reservdelslista  
Varaosuettelolo  
Reservedelsliste  
Wykaz części zamiennych  
Tartalékalkatrész lista  
Seznam náhradních dílů  
Seznam nadomestnih delov  
Zoznam náhradných dielov  
Rezervni dijelovi popis

**Lista pieselor de schimb**  
Páirteanna spártha liosta  
Κατάλογος ανταλλακτικών  
Yedek parça listesi  
Списък на резервните части  
Перечень запасных частей  
スベアパーツリスト  
예비 부품 목록  
备用零件目录



Pos.	Menge <sup>2)</sup> Quantity Quantité Quantità Cantidad	Bestell-Nr. Ident No. No. Identification No. Identificazione No. de pedido	Bezeichnung Description Designation Designazione Descripción
□	1	54900026800	Dichtungssatz, Complete set of seals, Jeu de joints, Kit di guarnizioni, Junta Completa
5	SATZ/KIT	90050900003	Schieber, Rotor Vane, Palette, Empujador
83	2	96541500000	Luftentölelement, Oil separating element, Element separation huile, Cartuccia sepa-ratore olio, Elemento de desaceitar de aire

<sup>2)</sup> erforderliche Bestellmenge / necessary order quantity / quantité nécessaire / quantità di ordinazione necessari / cantidad necesario

**Wartung**  
Maintenance  
Entretien  
Manutenzione  
Mantenimiento



**SERVICE**  
[www.becker-international.com](http://www.becker-international.com)  
Sales and service network

U 4.300

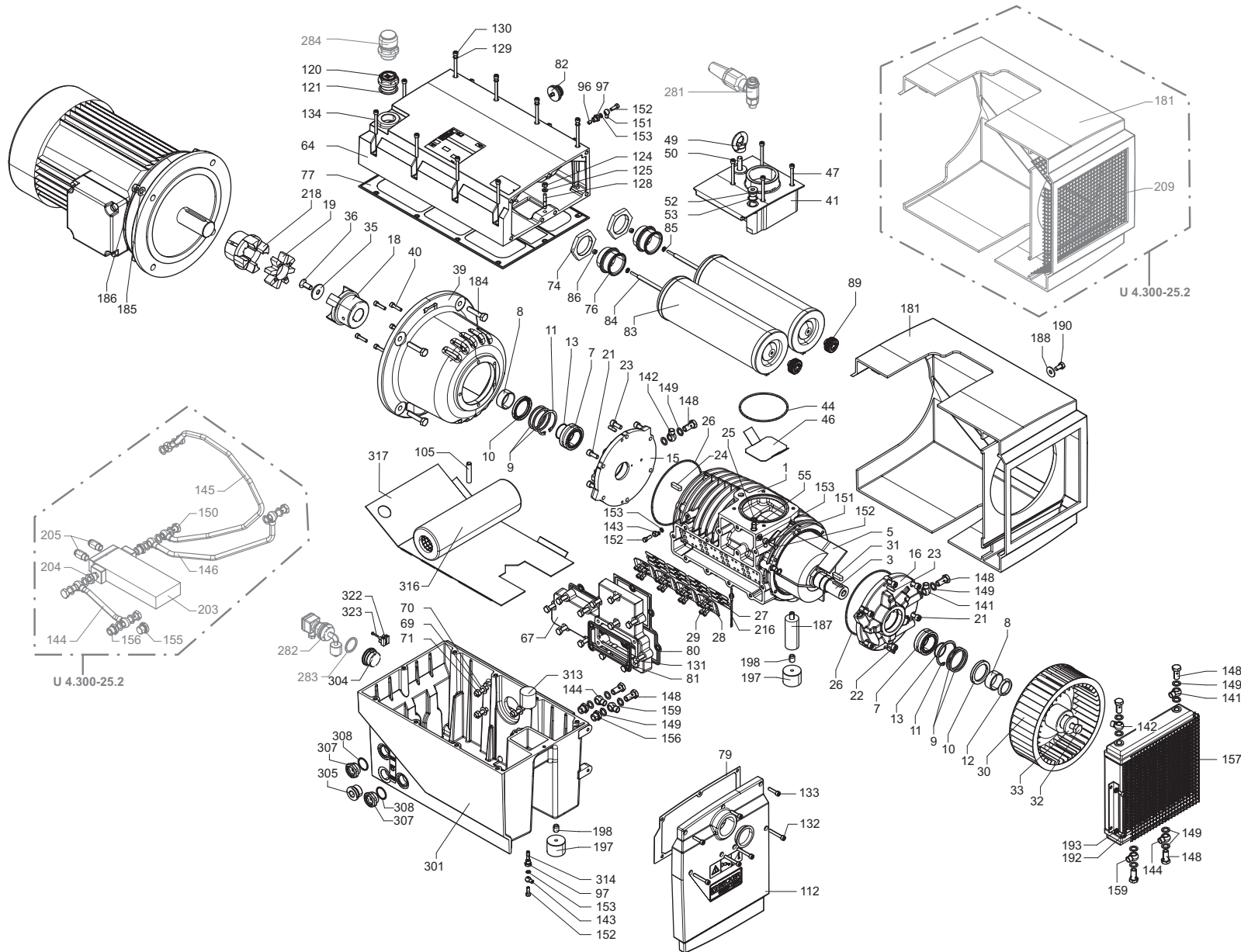
Standard



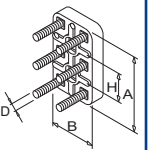
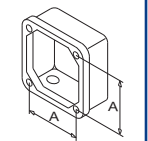
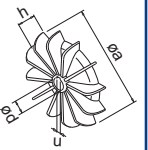
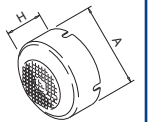
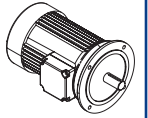
Variante






U 4.300/XX

 ①  
 U 4.300/0-25.2


SERVICE ?





INDEX	Pos.	Bestell Nr.	Beschreibung	
<b>U 4.300</b>	□	54900026800	<b>DICHTUNGSSATZ</b> <sup>1)</sup>	
	1	00010026800	GEHÄUSE	
	3	02000026800	KOLBEN	
	5	90050900003	<b>SCHIEBER, KUNSTSTOFF</b> (SATZ) <sup>2)</sup>	
	7	90661200000	NADELLAGER	
	8	90660000900	INNENRING	
	9	94801200000	DICHTRING	
	10	90654800000	WELLENDICHTRING	
	11	94823100000	SEEGERRING	
	12	01140026800	DISTANZSCHEIBE	
	15	00080026800	SEITENDECKEL	
	16	00070026800	SEITENDECKEL	
	18	90200026800	KUPPLUNGSHÄLFTE	
	19	90221000000	KUPPLUNGSSCHEIBE	
	21	94533000000	INNENSECHSKANTSCHRAUBE	
	22	94874200000	PASSKERBSTIFT	
	23	94762801000	ZYLINDERSTIFT	
	24	94780200000	PASSFEDER	
	27	93390010000	VENTILPLATTE	
	28	92910010000	VENTILFÄNGER	
	29	94521070000	INNENSECHSKANTSCHRAUBE	
	30	50230126400	VENTILATOR MIT NABE	
	31	94773200000	PASSFEDER	
	32	94527000000	WELLENENDSCHRAUBE	
	33	94940900000	UNTERLEGSCHEIBE	
	35	01680121300	SPANNSCHEIBE	
	36	94980700000	SENKKOPFSCHRAUBE	
	39	05320026500	LATERNE	
	40	94532100000	INNENSECHSKANTSCHRAUBE	
	41	53750226400	RÜCKSCHLAGVENTIL, KOMPL.	
	46	00800226400	SIEB	
	47	94537100000	INNENSECHSKANTSCHRAUBE	
	49	95160200000	RINGMUTTER	
	50	94696900000	STIFTSCHRAUBE	
	52	95122800000	VERSCHLUSSSCHRAUBE	
	55	95200800000	SPANNHÜLSE	
	64	00170326400	ÖLBEHÄLTER-DECKEL	
	67	00370026800	DECKEL	
	69	94691800000	STIFTSCHRAUBE	
	70	91710700000	TELLERFEDER	
	71	94710500000	SECHSKANTMUTTER	
	74	30580002000	ÜBERWURFMUTTER	
	76	02760299628	VENTILGEHÄUSE	
	82	53750226200	VENTIL, KOMPL.	
	83	96541500000	<b>LUFTENTÖLELEMENT</b> (2x) <sup>2)</sup>	
	84	03410199628	VENTILBOLZEN	
	85	94920400000	ZAHNSCHEIBE	
	86	94710300000	SECHSKANTMUTTER	
	89	92150050000	HANDGRIFF	
	96	00330130000	DÜSE	
	97	91230000000	ANSCHLUSS-SCHRAUBE	
	105	95201400000	SPANNHÜLSE	
	112	00370326400	DECKEL	
	120	91680010000	SCHRAUBDECKEL	
	124	94710400000	SECHSKANTMUTTER	
	125	94850400000	FEDERING	
	128	95100302000	STIFTSCHRAUBE	
	130	94538300000	INNENSECHSKANTSCHRAUBE	
	131	94524500000	SECHSKANTSCHRAUBE	

INDEX	Pos.	Bestell Nr.	Beschreibung	
	132	94536300000	INNENSECHSKANTSCHRAUBE	
	133	94532100000	INNENSECHSKANTSCHRAUBE	
	134	94532400000	INNENSECHSKANTSCHRAUBE	
	141	01220126800	LEITUNG	
	142	01220226800	LEITUNG	
	143	01220026800	ÖLRÜCKFÜHRLEITUNG	
	144	01220326800	LEITUNG	
	148	94840200000	HOHLSCHRAUBE	
	151	01222726400	LEITUNG	
	152	00940019000	KUGELSTÜCKSCHRAUBE	
	156	91230600000	ANSCHLUSS-SCHRAUBE	
	157	96020026800	KÜHLER	
	159	01220426800	LEITUNG	
	181	01830126400	HAUBE	
	184	94512700000	SECHSKANTSCHRAUBE	
	185	94750600000	UNTERLEGSCHEIBE	
	186	94710600000	SECHSKANTMUTTER	
	187	56810026400	STÜTZE	
	188	94940800000	UNTERLEGSCHEIBE	
	190	94522700000	SECHSKANTSCHRAUBE	
	192	94531800000	INNENSECHSKANTSCHRAUBE	
	193	94920300000	ZAHNSCHEIBE	
	197	74130200000	GUMMIPUFFER	
	198	94563400000	GEWINDESTIFT	
	216	94340260000	TEMPERATURFÜHLER	
	218	90210021900	KUPPLUNG	
	281	76870599626	GASBALLAST - OPTIONAL	
	282	74110399682	NIVEAUGEBER - OPTIONAL	
	284	91680099691	WARTUNGSANZEIGER - OPTIONAL	
	301	00241026400	ABSCHIEDERGEHÄUSE	
	304	95122100100	VERSCHLUSS-SCHRAUBE	
	305	95122000100	VERSCHLUSS-SCHRAUBE	
	307	90730900000	ÖLSCHAUGLAS	
	313	86780099559	SCHWIMMER	
	314	00330010700	DÜSE	
	316	50600026400	GROBABSCHIEDER, KOMPLETT	
	317	00800326400	FILTERBLECH	
	322	95070010000	LÜSTERKLEMME	
	323	94630400000	SCHRAUBE	
		96000900200	<b>BECKER LUBE M 100</b> (MINERALÖL) - 5L	
		96001600200	<b>BECKER LUBE S 100</b> (SYNTHETIKÖL) - 5L	
		96002300200	<b>BECKER LUBE SL 100</b> (LEBENSMITTELBEREICH) - 5L	

<sup>1)</sup> Dichtungssatz - 54900026800 - Pos.: 13, 25, 26, 44, 53, 77, 79, 80, 81, 121, 129, 149, 153, 283, 308  
<sup>2)</sup> erforderliche Bestellmenge / Wartung

INDEX	Pos.	Ident No.	Description	
<b>U 4.300</b>	□	54900026800	<b>SET OF SEALS</b> <sup>1)</sup>	
	1	00010026800	PUMP BODY	
	3	02000026800	ROTOR	
	5	90050900003	<b>ROTOR VANE IN PLASTIC (KIT)</b> <sup>2)</sup>	
	7	90661200000	NEEDLE BEARING	
	8	90660000900	INNER RING	
	9	94801200000	SEALING RING	
	10	90654800000	SHAFT SEALING RING	
	11	94823100000	SEEGER CIRCLIP	
	12	01140026800	SPACER	
	15	00080026800	SIDE COVER	
	16	00070026800	SIDE COVER	
	18	90200026800	COUPLING	
	19	90221000000	COUPLING DISC	
	21	94533000000	SOCKET HEAD SCREW	
	22	94874200000	GROOVED PIN	
	23	94762801000	CYLINDER PIN	
	24	94780200000	KEY	
	27	93390010000	VALVE PLATE	
	28	92910010000	VALVE KEEPER	
	29	94521070000	SOCKET HEAD SCREW	
	30	50230126400	FAN WITH HUB	
	31	94773200000	KEY	
	32	94527000000	SHAFT END BOLD	
	33	94940900000	WASHER	
	35	01680121300	TIGHTENING DISC	
	36	94980700000	COUNTERSUNK SCREW	
	39	05320026500	CONNECTION FLANGE	
	40	94532100000	SOCKET HEAD SCREW	
	41	53750226400	NON RETURN VALVE, COMPL.	
	46	00800226400	SIEVE	
	47	94537100000	SOCKET HEAD SCREW	
	49	95160200000	LIFTING-EYE NUT	
	50	94696900000	STUD	
	52	95122800000	SCREW PLUG	
	55	95200800000	FIXING SLEEVE	
	64	00170326400	OIL TANK CAP	
	67	00370026800	LID	
	69	94691800000	STUD	
	70	91710700000	SPRING COLLAR	
	71	94710500000	HEX-NUT	
	74	30580002000	COUPLING NUT	
	76	02760299628	BLOW-OFF VALVE	
	82	53750226200	VALVE, COMPL.	
	83	96541500000	<b>OIL SEPARATING ELEMENT (2x)</b> <sup>2)</sup>	
	84	03410199628	BOLT	
	85	94920400000	TOOTHED LOCK WASHER	
	86	94710300000	HEX-NUT	
	89	92150050000	HANDLE	
	96	00330130000	NOZZLE	
	97	91230000000	CONNECTING SCREW	
	105	95201400000	FIXING SLEEVE	
	112	00370326400	LID	
	120	91680010000	SCREW CAP	
	124	94710400000	HEX-NUT	
	125	94850400000	LOCK WASHER	
	128	95100302000	STUD	
	130	94538300000	SOCKET HEAD SCREW	
	131	94524500000	HEX HEAD SCREW	

INDEX	Pos.	Ident No.	Description	
	132	94536300000	SOCKET HEAD SCREW	
	133	94532100000	SOCKET HEAD SCREW	
	134	94532400000	SOCKET HEAD SCREW	
	141	01220126800	PIPE	
	142	01220226800	PIPE	
	143	01220026800	OIL RETURN PIPE	
	144	01220326800	PIPE	
	148	94840200000	HOLLOW SCREW	
	151	01222726400	PIPE	
	152	00940019000	HOLLOW HOLDING SCREW	
	156	91230600000	CONNECTING SCREW	
	157	96020026800	COOLER	
	159	01220426800	PIPE	
	181	01830126400	HOOD	
	184	94512700000	HEX HEAD SCREW	
	185	94750600000	WASHER	
	186	94710600000	HEX-NUT	
	187	56810026400	SUPPORT PILLAR	
	188	94940800000	WASHER	
	190	94522700000	HEX HEAD SCREW	
	192	94531800000	SOCKET HEAD SCREW	
	193	94920300000	TOOTHED LOCK WASHER	
	197	74130200000	BUMPER	
	198	94563400000	THREADED PIN	
	216	94340260000	TEMPERATURE SENSOR	
	218	90210021900	COUPLING	
	281	76870599626	GAS BALLAST VALVE - OPTIONAL	
	282	74110399682	LEVEL TRANSMITTER - OPTIONAL	
	284	91680099691	MAINTENANCE INDICATOR - OPTIONAL	
	301	00241026400	HOUSING FOR OIL SEPARATION	
	304	95122100100	SCREW PLUG	
	305	95122000100	SCREW PLUG	
	307	90730900000	OIL SIGHT GLASS	
	313	86780099559	FLOAT	
	314	00330010700	NOZZLE	
	316	50600026400	COARSE SEPARATOR	
	317	00800326400	DRAINER	
	322	95070010000	LUSTER TERMINAL	
	323	94630400000	SCREW	
		96000900200	<b>BECKER LUBE M 100</b> (MINERAL OIL) - 5L	
		96001600200	<b>BECKER LUBE S 100</b> (SYNTHETIC OIL) - 5L	
		96002300200	<b>BECKER LUBE SL 100</b> (FOOD SECTOR) - 5L	

<sup>1)</sup> Set of seals - 54900026800 - Pos.: 13, 25, 26, 44, 53, 77, 79, 80, 81, 121, 129, 149, 153, 283, 308

<sup>2)</sup> necessary order quantity / maintenance

INDICE	Pos.	No. Identification	Designation
U 4.300	□	54900026800	JEU DE JOINTS <sup>1)</sup>
	1	00010026800	CORP DE POMPE
	3	02000026800	PISTON
	5	90050900003	PALETTE ON PLASTIQUE (KIT) <sup>2)</sup>
	7	90661200000	ROULEMENT À AIGUILLES
	8	90660000900	BAGUE INTÉRIEURE
	9	94801200000	ANNEAU DE JOINT
	10	90654800000	BAGUE D'ÉTANCHEITÉ
	11	94823100000	FREIN D'AXES SEEGER
	12	01140026800	ENTRETOISE
	15	00080026800	CAPOT LATÉRAL
	16	00070026800	CAPOT LATÉRAL
	18	90200026800	ACCOUPLLEMENT
	19	90221000000	DISQUE D'ACCOUPLLEMENT
	21	94533000000	VIS ALLEN
	22	94874200000	GOUPILLE CANNELÉE
	23	94762801000	CHEVILLE CYLINDRIQUE
	24	94780200000	CLAVETTE
	27	93390010000	PLAQUE DES VANNES
	28	92910010000	PLAQUE D'ARRÊT
	29	94521070000	VIS ALLEN
	30	50230126400	VENTILATEUR AVEC MOYEU
	31	94773200000	CLAVETTE
	32	94527000000	VIS BOUT D'ARBRE
	33	94940900000	RONDELLE
	35	01680121300	RONDELLE DE SERRAGE
	36	94980700000	VIS À TÊTE NOYÉE
	39	05320026500	BRIDE DE RACCORDEMENT
	40	94532100000	VIS ALLEN
	41	53750226400	SOUPAPE DE RETENUE, COMPL.
	46	00800226400	TAMIS
	47	94537100000	VIS ALLEN
	49	95160200000	ÉCROU À ANNEAU
	50	94696900000	GOUJON PRISONNIER
	52	95122800000	BOUCHON FILETÉ
	55	95200800000	MANCHON DE FIXATION
	64	00170326400	COUVERCLE DU RÉSERVOIR D'HUILE
	67	00370026800	COUVERCLE
	69	94691800000	GOUJON PRISONNIER
	70	91710700000	RONDELLE À RESSORT
	71	94710500000	ÉCROU HEXAGONAL
	74	30580002000	ÉCROU
	76	02760299628	SOUPAPE D'ÉCHAPPEMENT
	82	53750226200	SOUPAPE, COMPL.
	83	96541500000	ELEMENT SEPARATION HUILE (2x) <sup>2)</sup>
	84	03410199628	BOULON
	85	94920400000	RONDELLE À DENTS
	86	94710300000	ÉCROU HEXAGONAL
	89	92150050000	POIGNEE
	96	00330130000	AJUTAGE
	97	91230000000	VIS DE RACCORD
	105	95201400000	MANCHON DE FIXATION
	112	00370326400	COUVERCLE
	120	91680010000	COUVERCLE À VIS
	124	94710400000	ÉCROU HEXAGONAL
	125	94850400000	RONDELLE ÉLASTIQUE
	128	95100302000	GOUJON PRISONNIER
	130	94538300000	VIS ALLEN
	131	94524500000	VIS SIX-PANS

INDICE	Pos.	No. Identification	Designation
	132	94536300000	VIS ALLEN
	133	94532100000	VIS ALLEN
	134	94532400000	VIS ALLEN
	141	01220126800	TUYAU
	142	01220226800	TUYAU
	143	01220026800	TUYAU D'HUILE
	144	01220326800	TUYAU
	148	94840200000	VIS CREUSE
	151	01222726400	TUYAU
	152	00940019000	VIS CREUSE DE FIXATION
	156	91230600000	VIS DE RACCORD
	157	96020026800	REFROIDISSEUR
	159	01220426800	TUYAU
	181	01830126400	CAPOT
	184	94512700000	VIS SIX-PANS
	185	94750600000	RONDELLE
	186	94710600000	ÉCROU HEXAGONAL
	187	56810026400	SUPPORT INTERMEDIARE
	188	94940800000	RONDELLE
	190	94522700000	VIS SIX-PANS
	192	94531800000	VIS ALLEN
	193	94920300000	RONDELLE À DENTS
	197	74130200000	AMORTISSEUR CAOUTCHOUC
	198	94563400000	GOUPILLE FILETÉE
	216	94340260000	SONDE DE TEMPÉRATURE
	218	90210021900	ACCOUPLLEMENT
	281	76870599626	L'ESTE D'AIR - EN OPTION
	282	74110399682	CAPTEUR DE NIVEAU - EN OPTION
	284	91680099691	ENTRETIEN ANNONCEURS - EN OPTION
	301	00241026400	CORP DE SEPARATEUR D'HUILE
	304	95122100100	BOUCHON FILETÉ
	305	95122000100	BOUCHON FILETÉ
	307	90730900000	VERRE REGARD
	313	86780099559	PIED CAOUTCHOVE
	314	00330010700	AJUTAGE
	316	50600026400	SEPARATEUR A GROS
	317	00800326400	PASSOIRE
	322	95070010000	SERRE-FILS
	323	94630400000	VIS
		96000900200	BECKER LUBE M 100 (HUILE MINÉRALE) - 5L
		96001600200	BECKER LUBE S 100 (L'HUILE SYNTHÉTIQUE) - 5L
		96002300200	BECKER LUBE SL 100 (SECTEUR DE L'ALIMENTATION) - 5L

<sup>1)</sup> Jeu de joints - 54900026800 - Pos.: 13, 25, 26, 44, 53, 77, 79, 80, 81, 121, 129, 149, 153, 283, 308


<sup>2)</sup> quantité nécessaire / entretien

INDICE	Pos.	No. Identificazione	Designazione
U 4.300	□	54900026800	SERIE DI GUARNIZIONE <sup>1)</sup>
	1	00010026800	CARCASSA
	3	02000026800	ROTORE
	5	90050900003	PALETTE IN PLASTICA (KIT) <sup>2)</sup>
	7	90661200000	CUSCINETTO AD AGHI
	8	90660000900	ANELLO INTERNO
	9	94801200000	ANELLO DI GUARNIZIONE
	10	90654800000	ANELLO DI GUARNIZIONE
	11	94823100000	ANELLO ELASTICO DI SICUREZZA
	12	01140026800	DISTANZIALE
	15	00080026800	COPERCHIO LATERALE
	16	00070026800	COPERCHIO LATERALE
	18	90200026800	GUINTO
	19	90221000000	DISCO GUINTO
	21	94533000000	VITE A TESTA CONCAVA ESAGONALE
	22	94874200000	SPINA SCANALATA
	23	94762801000	SPINA CILINDRICA
	24	94780200000	CHIAVETTA
	27	93390010000	PIASTRA VALVOLE
	28	92910010000	PIASTRA DI RIFERIMENTO
	29	94521070000	VITE A TESTA CONCAVA ESAGONALE
	30	50230126400	VENTILATORE CON MOZZO
	31	94773200000	CHIAVETTA
	32	94527000000	VITE DI CHIUSURA ALBERO
	33	94940900000	RONDELLA
	35	01680121300	RONDELLA DI SERRAGGIO
	36	94980700000	VITE A TESTA SVASATA
	39	05320026500	FLANGIA DI RACCORDE
	40	94532100000	VITE A TESTA CONCAVA ESAGONALE
	41	53750226400	VALVOLA DI RITENUTA, COMPL.
	46	00800226400	CRIVELLO
	47	94537100000	VITE A TESTA CONCAVA ESAGONALE
	49	95160200000	DADO AD OCCHIELLO
	50	94696900000	VITE PRIGIONIERA
	52	95122800000	TAPPO A VITE
	55	95200800000	MANICOTTO DI FISSAZIONE
	64	00170326400	COPERCHIO DEL SERBATOIO OLIO
	67	00370026800	COPERCHIO
	69	94691800000	VITE PRIGIONIERA
	70	91710700000	RONDELLA A MOLLA
	71	94710500000	DADO ESAGONALE
	74	30580002000	DADO DI RISVOLTO
	76	02760299628	VALVOLA DI SFIATO
	82	53750226200	VALVOLA, COMPL.
	83	96541500000	CARTUCCIA SEPARATORE OLIO (2x) <sup>2)</sup>
	84	03410199628	BULLONE
	85	94920400000	RONDELLA DENTATA
	86	94710300000	DADO ESAGONALE
	89	92150050000	MANETTA
	96	00330130000	UGELLO
	97	91230000000	ATTACO FILETTATO
	105	95201400000	MANICOTTO DI FISSAZIONE
	112	00370326400	COPERCHIO
	120	91680010000	COPERCHIO A VITE
	124	94710400000	DADO ESAGONALE
	125	94850400000	RONDELLA GROWER
	128	95100302000	VITE PRIGIONIERA
	130	94538300000	VITE A TESTA CONCAVA ESAGONALE
	131	94524500000	VITE ESAGONALE

INDICE	Pos.	No. Identificazione	Designazione
	132	94536300000	VITE A TESTA CONCAVA ESAGONALE
	133	94532100000	VITE A TESTA CONCAVA ESAGONALE
	134	94532400000	VITE A TESTA CONCAVA ESAGONALE
	141	01220126800	CONDOTTO
	142	01220226800	CONDOTTO
	143	01220026800	CONDOTTO OLIO
	144	01220326800	CONDOTTO
	148	94840200000	VITE ESAGONALE
	151	01222726400	CONDOTTO
	152	00940019000	VITE PASSAGGIO OLIO
	156	91230600000	ATTACO FILETTATO
	157	96020026800	RAFFREDDATORE
	159	01220426800	CONDOTTO
	181	01830126400	CAPOTTA
	184	94512700000	VITE ESAGONALE
	185	94750600000	RONDELLA
	186	94710600000	DADO ESAGONALE
	187	56810026400	SUPPORTO
	188	94940800000	RONDELLA
	190	94522700000	VITE ESAGONALE
	192	94531800000	VITE A TESTA CONCAVA ESAGONALE
	193	94920300000	RONDELLA DENTATA
	197	74130200000	PINGENTE DI GOMMA
	198	94563400000	SPINA FILETTATO
	216	94340260000	SONDA TERMICA
	218	90210021900	GUINTO
	281	76870599626	VALVOLA DI ZAVORATRICE - OPTIONALE
	282	74110399682	INDICATORE DI LIVELLO - OPTIONALE
	284	91680099691	INDICATORI DI MANUTENZIONE - OPTIONALE
	301	00241026400	CARCASSA SEPARATORE OLIO
	304	95122100100	TAPPO A VITE
	305	95122000100	TAPPO A VITE
	307	90730900000	SPIA LIVELLO OLIO
	313	86780099559	GALLEGGIANTE
	314	00330010700	UGELLO
	316	50600026400	SEPARATORE GROSSOLANO
	317	00800326400	GRONDAIA
	322	95070010000	SCATOLA DEI CONNETTORI
	323	94630400000	VITE
		96000900200	<b>BECKER LUBE M 100</b> (OLIO MINERALE) - 5L
		96001600200	<b>BECKER LUBE S 100</b> (OLIO SINTETICO) - 5L
		96002300200	<b>BECKER LUBE SL 100</b> (SETTORE ALIMENTARE) - 5L

<sup>1)</sup> Serie di guarnizione - 54900026800 - Pos.: 13, 25, 26, 44, 53, 77, 79, 80, 81, 121, 129, 149, 153, 283, 308

<sup>2)</sup> quantità di ordinazione necessari / manutenzione

INDICE	Pos.	No. De pedido	Descripción	
U 4.300	□	54900026800	JUNTA COMPLETA <sup>1)</sup>	
	1	00010026800	CARCASA	
	3	02000026800	ÉMBOLO	
	5	90050900003	EMPUJADOR DE PLÁSTICO (KIT) <sup>2)</sup>	
	7	90661200000	COJINETE DE AGUJAS	
	8	90660000900	ANILLO INTERIOR	
	9	94801200000	ANILLO JUNTA	
	10	90654800000	ANILLO DE RETÉN RADIAL	
	11	94823100000	ANILLO DE RETENCIÓN ELÁSTICO	
	12	01140026800	ARANDELA DISTANCIADORA	
	15	00080026800	CUBIERTA LATERAL	
	16	00070026800	CUBIERTA LATERAL	
	18	90200026800	MITAD DE ACOPLAMIENTO	
	19	90221000000	DISCO DE ACOPLAMIENTO	
	21	94533000000	TORNILLO CILÍNDRICO CON HEXÁGONO HEMBRA	
	22	94874200000	PASADOR RANURADO	
	23	94762801000	PASADOR CILÍNDRICO	
	24	94780200000	CHAVETA	
	27	93390010000	PLACA DE VÁLVULA	
	28	92910010000	PLACA DE TOPE	
	29	94521070000	TORNILLO CILÍNDRICO CON HEXÁGONO HEMBRA	
	30	50230126400	VENTILADOR CON CUBO	
	31	94773200000	CHAVETA	
	32	94527000000	TORNILLO TEERMINAL DE ARBOL	
	33	94940900000	ARANDELA	
	35	01680121300	DISCO DE REFUERZO	
	36	94980700000	TORNILLO DE CABEZA AVELLANADA	
	39	05320026500	FAROL	
	40	94532100000	TORNILLO CILÍNDRICO CON HEXÁGONO HEMBRA	
	41	53750226400	VÁLVULA DE RETENCIÓN, COMPL.	
	46	00800226400	CRIBA	
	47	94537100000	TORNILLO CILÍNDRICO CON HEXÁGONO HEMBRA	
	49	95160200000	TUERCA	
	50	94696900000	ESPÁRRAGO	
	52	95122800000	TAPÓN ROSCADO	
	55	95200800000	MANGUITO DE FIJACIÓN	
	64	00170326400	TAPA DE RECIPIENTE DE ACEITE	
	67	00370026800	TAPA	
	69	94691800000	ESPÁRRAGO	
	70	91710700000	ARANDELA DE APOYO DEL RESORTE	
	71	94710500000	TUERCA HEXAGONAL	
	74	30580002000	SOBRETUERCA	
	76	02760299628	VÁLVULA DE ESCAPE	
	82	53750226200	VÁLVULA, COMPL.	
	83	96541500000	ELEMENTO DE DESACEITAR DE AIRE (2x) <sup>2)</sup>	
	84	03410199628	BULÓN	
	85	94920400000	ARANDELA DENTADA	
	86	94710300000	TUERCA HEXAGONAL	
	89	92150050000	EMPUÑADURA	
	96	00330130000	TOBERA	
	97	91230000000	TORNILLO DE EMPALME	
	105	95201400000	MANGUITO DE FIJACIÓN	
	112	00370326400	TAPA	
	120	91680010000	TAPA DE ROSCA	
	124	94710400000	TUERCA HEXAGONAL	
	125	94850400000	ARANDELA GROWER	
	128	95100302000	ESPÁRRAGO	
	130	94538300000	TORNILLO CILÍNDRICO CON HEXÁGONO HEMBRA	
	131	94524500000	TORNILLO DE CABEZA HEXAGONAL	

INDICE	Pos.	No. De pedido	Descripción	
	132	94536300000	TORNILLO CILÍNDRICO CON HEXÁGONO HEMBRA	
	133	94532100000	TORNILLO CILÍNDRICO CON HEXÁGONO HEMBRA	
	134	94532400000	TORNILLO CILÍNDRICO CON HEXÁGONO HEMBRA	
	141	01220126800	CONDUCTO	
	142	01220226800	CONDUCTO	
	143	01220026800	CONDUCTO DE RETROALIMENTACIÓN DE ACEITE	
	144	01220326800	CONDUCTO	
	148	94840200000	TORNILLO HUECO	
	151	01222726400	CONDUCTO	
	152	00940019000	TORNILLO DE PIEZA ESFÉRICA	
	156	91230600000	TORNILLO DE EMPALME	
	157	96020026800	REFRIGERADOR	
	159	01220426800	CONDUCTO	
	181	01830126400	CUBIERTA	
	184	94512700000	TORNILLO DE CABEZA HEXAGONAL	
	185	94750600000	ARANDELA	
	186	94710600000	TUERCA HEXAGONAL	
	187	56810026400	APOYO	
	188	94940800000	ARANDELA	
	190	94522700000	TORNILLO DE CABEZA HEXAGONAL	
	192	94531800000	TORNILLO CILÍNDRICO CON HEXÁGONO HEMBRA	
	193	94920300000	ARANDELA DENTADA	
	197	74130200000	AMORTIGUADOR DE CAUCHO	
	198	94563400000	PASADOR ROSCADO	
	216	94340260000	ELEMENTO TÉRMICO	
	218	90210021900	ACOPLAMIENTO	
	281	76870599626	VÁLVULA DE LASTRE DE GAS - OPCIONAL	
	282	74110399682	CODIFICADOR DE NIVEL - OPCIONAL	
	284	91680099691	INDICADORES DE MANTENIMIENTO - OPCIONAL	
	301	00241026400	CARCASA SEPARADORA	
	304	95122100100	TAPÓN ROSCADO	
	305	95122000100	TAPÓN ROSCADO	
	307	90730900000	CRISTAL MIRILLA DE ACEITE	
	313	86780099559	FLOTADOR	
	314	00330010700	TOBERA	
	316	50600026400	SEPARADOR DE SÓLIDOS GRUESOS	
	317	00800326400	ESCURRIDOR DE ACEITE	
	322	95070010000	CAJA DE CONEXIÓN	
	323	94630400000	TORNILLO	
		96000900200	BECKER LUBE M 100 (ACEITE MINERAL) - 5L	
		96001600200	BECKER LUBE S 100 (ACEITE SINTÉTICO) - 5L	
		96002300200	BECKER LUBE SL 100 (SECTOR ALIMENTARIO) - 5L	

<sup>1)</sup> Junta completa - 54900026800 - Pos.: 13, 25, 26, 44, 53, 77, 79, 80, 81, 121, 129, 149, 153, 283, 308

<sup>2)</sup> cantidad necesario / mantenimiento

U 4.300	Variante 	Pos. <sup>2)</sup>	Bestell Nr. / Ident No. / No. Identification / No. Identificazione / No. De pedido		Beschreibung / Description / Designation / Designazione / Desripcion	
① U 4.300/0-25.2 - nur mit ÖL-Wasser-Kühler - only with oil-to-water heat exchanger - avec réfrigérant à l'huile et à l'eau - con radiatore ad olio - acqua - con refrigerador aceite-agua		141		042201-26800	LEITUNG / PIPE / TUYAU / CONDOTTO / CONDUCTO	
		142		042202-26800	LEITUNG / PIPE / TUYAU / CONDOTTO / CONDUCTO	
		144	012225 26400		042203-26800	LEITUNG / PIPE / TUYAU / CONDOTTO / CONDUCTO
		145	012212 26400		-	LEITUNG / PIPE / TUYAU / CONDOTTO / CONDUCTO
		146	012213 26400			LEITUNG / PIPE / TUYAU / CONDOTTO / CONDUCTO
		150	948420 00000		-	HOHLSCHRAUBE / HOLLOW SCREW / VIS CREUSE / VITE ESAGONALE / TORNILLO HUECO
		155	951202 00100		-	VERSCHLUSSSCHRAUBE / SCREW PLUG / BOUCHON FILETÉ / TAPPO A VITE / TAPÓN ROSCADO
		157			960201-26800	KUEHLER / COOLER / REFROIDISSEUR / RAFFREDDATORE / REFRIGERADOR
		159			042204-26800	LEITUNG / PIPE / TUYAU / CONDOTTO / CONDUCTO
		181	018304 26400		048304-26400	HAUBE / PROTECTING HOOD / CARTER PROTECTEUR / CARTER DI PROTEZIONE / SOMBRERETE
		192			945318-00000	INNENSECHSKANTSCHRAUBE / ALLEN SCREW / VIS ALLEN / VITE ESAGONALE INTERNA / TORNILLO HEXAGONAL INTERIOR
		193			949203-00000	ZAHNSCHEIBE / TOOTHED LOCK WASHER / RONDELLE À DENTS / RONDELLA DENTATA / ARANDELA DENTADA
		203	960207 26200			KÜHLER / COOLER / REFROIDISSEUR / RAFFREDDATORE / REFRIGERADOR
		204	912306 00000			ANSCHLUSSSCHRAUBE / CONNECTING SCREW / VIS DE RACCORD / ATTACO FILETTATO / TORNILLO DE EMPALME
		205	969432 00000			L-VERSCHRAUBUNG / L-PIECE / L-PIECE / PEZZO A L / ATORNILLADURA
		209	922401 20000			SCHUTZGITTER / SAFETY GUARD / GRILLAGE DE PROTECTION / GABBIA DI PROTEZIONE / REJILLA DE PROTECCIÓN
		313			867800-99559	SCHWIMMER / FLOAT / FLOTTEUR / GALLEGGIANTE / FLOTADOR

<sup>2)</sup> variantenabhängige Bauteile / variant-dependent components / composants variante-dependantes / componenti variante-dispendenti / componentes variante-dependientes